

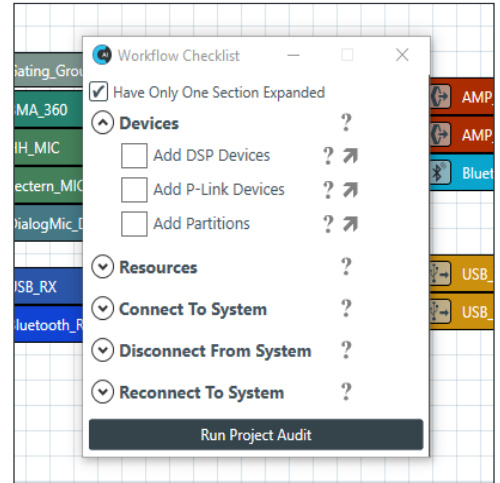
# CONSOLE® AI



CONSOLE AI configuration and control software is the smart way to design a CONVERGE® Pro 2 Audio system with Audio Intelligence built in – making AV practitioners more efficient by saving time and avoiding programming errors.

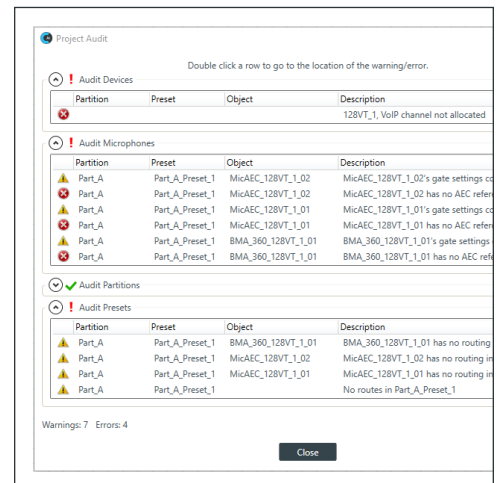
- > The Audio Intelligence Workflow Checklist guides you as you build your system to make sure that you never miss a step.
- > Provides a seamless design interface even when linking multiple CP2 processors, allowing large systems to be created.
- > Supports enhanced network connection access and security on CP2 mixers using 802.1X protocols.
- > Configure custom BMA 360 beam patterns for optimized performance in acoustically challenging rooms or when covering unique seating arrangements.
- > Macros can be easily programmed utilizing the Macro Wizard and Command recorder.
- > MatrixView™ and FlowView™ modes provide multiple ways of seeing routing and configuration data in the same software interface.
- > Auto Discovery utility rapidly identifies and lists all supported equipment connected to USB or available over network.
- > The easy-to-use audio channel grouping feature simplifies system flow views and creates unified group controls without compromising individual channel control.
- > Provides two room design modes—Simple and Advanced. Simple mode is ideal for single-room designs, while Advanced mode offers additional controls and features to create complex multi-room designs.
- > Supports configuration of native CP2 camera tracking, which provides direct serial and VISCA over IP camera control.
- > Presets, partitions and GPIO allow simple serial control commands to execute complex configuration changes instantly.
- > The built in Software and Firmware update manager keeps both software and firmware versions up to date.

# AUDIO CONFERRING



### Never Miss a Step

FlowView™ enhanced visualization tools dramatically streamline the system design, programming and review process. Visual language elements include drag-and-drop, boundary boxes, mixer blocks, route highlighting, and custom routing lines.



### AI Checks Your Design

The Audio Intelligence Project Audit checks your design and reports errors and warnings to alert you of potential problems

### APPLICATIONS

- Audio Conferencing
- Video Conferencing
- BYOD Conferencing
- Web Conferencing

### WORKSPACES

- Executive Offices
- Huddle and BYOD Spaces
- Conference Rooms
- Multi-purpose Rooms
- Boardrooms
- Lecture Halls

# CONSOLE® AI

- PART NUMBER** • SWR-1000-001
- WIRELESS MICROPHONE SYSTEM** .... • Up to 24-bit, 48 KHz, digital audio RF technology  
• Compatible with Windows, iOS, Android and MAC
- INSTALLATION REQUIREMENTS** ..... • CONSOLE AI may be installed on any PC that meets the following requirements:  
- Windows 10 and 11, all versions; 32-bit or 64-bit  
- 1 gigahertz (GHz) or faster processor  
- 1 gigabyte (GB) of 32-bit RAM or 2 GB of 64-bit RAM  
- 160 Megabytes (MB) of hard drive space  
- Minimum screen resolution of 1024 x 768
- REQUIRED NETWORK PROTOCOLS** ... • UDP data sent via broadcast and directed IP  
• FTP file transfer to and from networked devices  
• FTP web server access for firmware and software updates  
• Ports required:  
- 21 - FTP  
- 3602 - UDP Device Discovery  
- 4912 - TCP Communication
- PRODUCTS SUPPORTED** ..... • Version 5.x and higher Converge Pro 2 DSP Mixers and associated peripheral devices  
• Version 5.x and higher Huddle DSP Mixers and associated peripheral devices
- LANGUAGES SUPPORTED** ..... • English, Spanish, German, Japanese, Chinese (Simplified), Korean, Arabic, Russian, and French

## SALES AND INQUIRIES

---

### Headquarters

5225 Wiley Post Way  
Suite 500  
Salt Lake City, UT 84116

### US & Canada

Tel: +1.801.975.7200

### International

Tel: +1.801.975.7200

### Sales

Tel: +1.801.975.7200  
sales@clearone.com

### Tech Support

Tel: +1.801.974.3760  
videotechsupport@clearone.com